

# Managed Floodplain Inundation at Katarapko Floodplain

First Operation – September to December 2020



30 August 2020

## Background

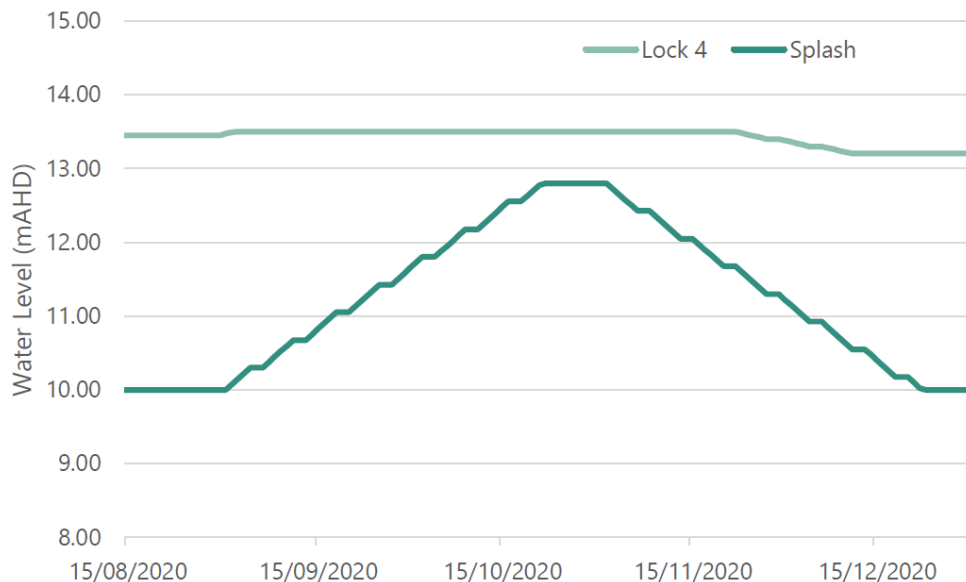
Environmental watering infrastructure has been constructed on the Katarapko Floodplain (see map overleaf) under the South Australian Riverland Integrated Infrastructure Program (SARFIIP), funded by the Commonwealth Government. The infrastructure will be used to improve the health and resilience of the floodplain by enabling inundation events when there is considerably less water in the river than usually required to have 'natural' overbank flows.

The operation will be undertaken in line with the Operations Plan and coordinated by DEW and the Floodplain Operations Advisory Group (FOAG), which comprises representatives from DEW, SA Water, the Murray Darling Basin Authority, the Commonwealth Environmental Water Holder, First Nations, and others. SA Water staff will operate the infrastructure.

## Aim for First Operation in 2020

The aim is to operate the Katarapko floodplain regulators to raise water levels in the creeks by up to approximately 2.8 metres (up to 12.8 m AHD) to create a medium-extent inundation. This will enable the final testing of the structures to ensure that they work as designed and to achieve ecological benefits for the floodplain vegetation and wildlife. Lock 4 is currently raised by 25 cm and will be raised further to up to 30 cm above normal operating levels during the Katarapko operations.

The event will commence in the first week of September 2020 and conclude on approximately 21 December 2020. The operating hydrograph (Figure 1) shows how the water levels at the main regulator (known as The Splash) and Lock 4 will be raised.



**Figure 1: Operating hydrograph for first operation at Katarapko Floodplain up to 12.8 m AHD**

The environmental watering will be closely monitored to ensure water quality remains within acceptable levels.

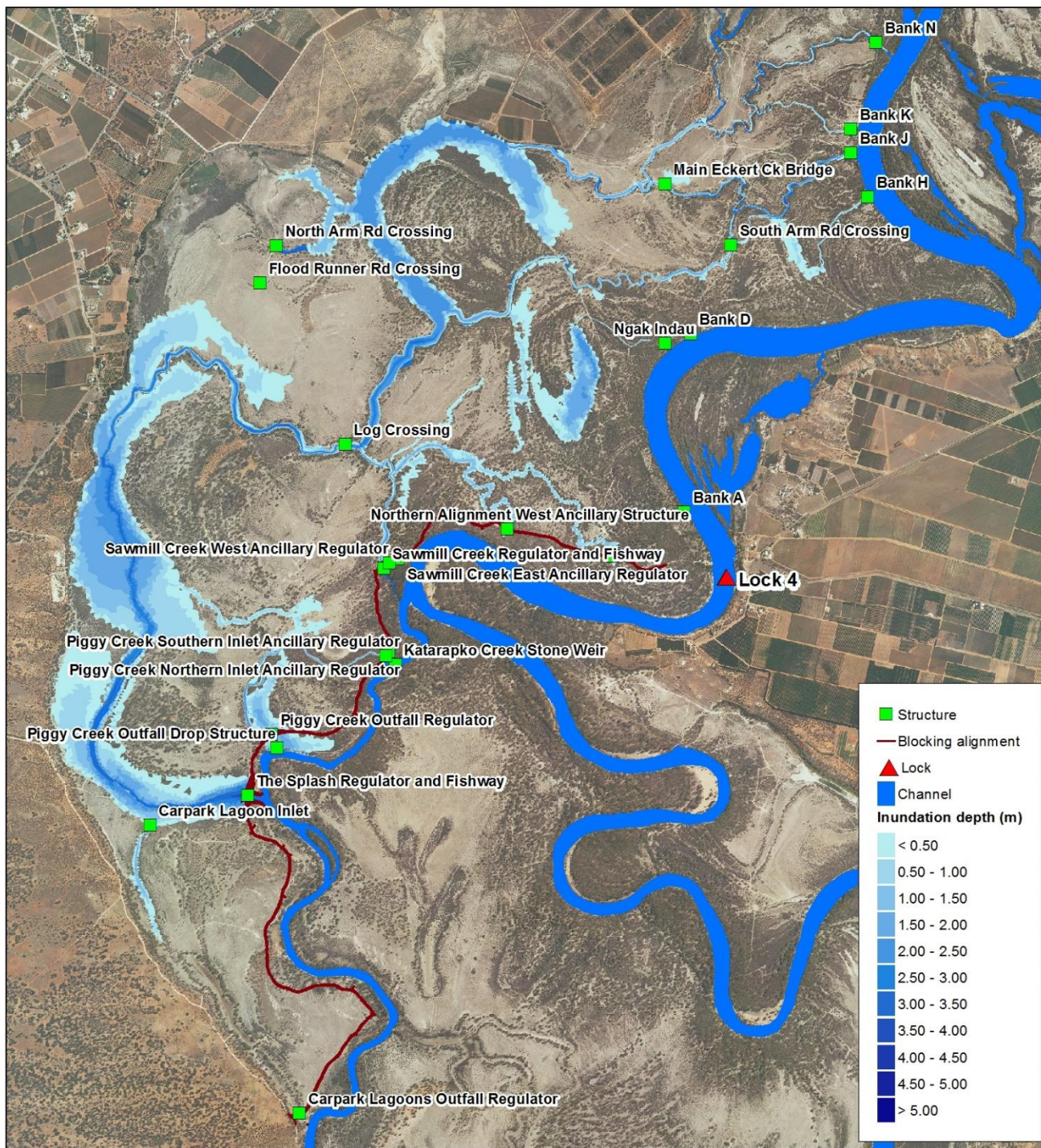
A network of surface water monitoring stations have been set up to continuously measure DO, salinity, water level, and flow. The data is publicly available on WaterConnect at [www.waterconnect.sa.gov.au/Systems/RTWD/Pages/Default.aspx](http://www.waterconnect.sa.gov.au/Systems/RTWD/Pages/Default.aspx)

The data will be monitored closely by DEW and SA Water throughout the event. Other monitoring of the vegetation and the wildlife responses to the watering will also occur throughout and after the operation.



# Katarapko Floodplain

## Managed inundation level to 12.8 m AHD



PRODUCED BY: Science Information and Technology Group  
 MAP PROJECTION: Lambert Conformal Conic  
 MAP DATUM: Geocentric Datum of Australia 1994  
 DATE: August 2020



**Government of South Australia**  
 Department for Environment  
 and Water

**For Official Use Only**

**DISCLAIMER:** The Department for Environment and Water, its employees and servants do not warrant or make any representation regarding the use, or results of use of the information contained herein as to its correctness, accuracy, currency or otherwise. The Department for Environment and Water, its employees and servants expressly disclaim all liability or responsibility to any person using the information or advice contained herein.

© Copyright Department for Environment and Water 2020. All Rights Reserved. All works and information displayed are subject to Copyright. For the reproduction or publication beyond that permitted by the Copyright Act 1968 (Cwlth) written permission must be sought from the Department.